


Thumb Nut

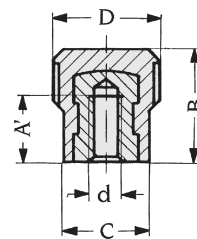
Knob in reinforced Duroplast, semi-matt finish. Standard color black.

 **Fastening**, brass insert.

 **Optimum utilisation** between -50° and 155° Celsius, outstanding resistance to chemicals, oil as well as tough climatic conditions.




BOUTET introduced, in september 2009, the 1st full service e-shop for industrial components, with free access to live real-time stock levels. **SAME DAY UPS Shipping** to 45 countries, and satellite tracking of your parcels. The total customer experience.



Brass insert

Thumb nut with brass insert

Type	D	d	B	C	A'	Reference	 g	Pack
a	12	M3	13,5	10	6,5	12206	5	50 pcs
a	12	M4	13,5	10	10	12207	5	50 pcs
a	15	M4	15,5	12	10	12225	6	50 pcs
a	15	M5	15,5	12	10	12208	6	50 pcs
a	15	M6	15,5	12	9	11340	6	50 pcs