

Ball Knob

with metal insert

Knob in high-resistance Duroplast allowing for high temperature resistance and durability. Long-lasting and high-tech gloss. Standard color is black.

Fastening, zinc-plated steel insert (except brass for ref. 2263 and 1088).

Optimum utilisation between -50° to 155° Celsius, outstanding resistance to chemicals, oil as well as tough climatic conditions.



Most BOUTET products can be "wrapped up" in high-tech silicone rubber for an amazing softness of touch. And silicone has also the highest temperature resistance, 280° Celsius.



RAL 6005



RAL 1021



RAL 5015



RAL 7047



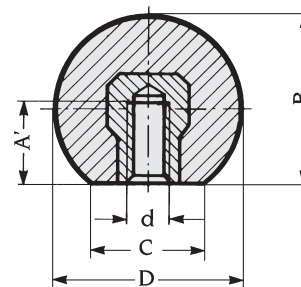
RAL 9003



RAL 3020

Ball knob with female insert

D	d	B	C	A'	Reference	g
20	M5	18	12	10	2263*	7
20	M6	18	12	10	1088*	7
25	M6	23,2	13	12	1256	14
25	M8	23,2	13	11	1332	15
32	M6	29	18	13	18.040	20
32	M8	29	18	16	18.041	25
35	M10	32,8	17	14	1349	34
40	M8	37,3	20	14	457	45
40	M10	37,3	20	22	1135	46
40	M12	37,3	20	21	1350	48
45	M10	42,6	20	22	1351	60
50	M10	47,5	22	22	1275	78
50	M12	47,5	22	21	1250	80



Zinc-plated steel insert, except brass for reference 2263 and 1088