

Knob Sologne

with through insert

Knob made of **polyamid** filled with microscopic glass beads, allowing for high-impact resistance and durability. Standard color is black.

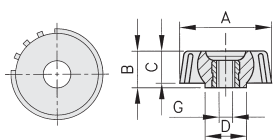
Fastening, zinc plated steel insert.

Optimum utilisation between -50° and 130° Celsius, outstanding resistance to chemicals, oil as well as tough climatic conditions.

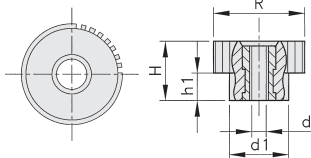
Product also available in **stainless steel**.



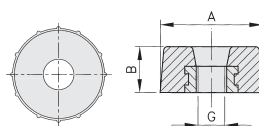
Photo : Design 1 bis and Design 4



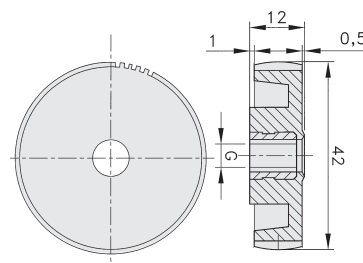
design 1
Zinc plated steel
through insert



design 1bis
Zinc plated steel
through insert



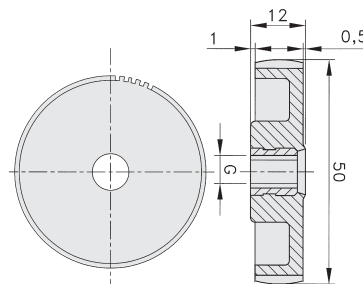
design 2
Zinc plated steel
through insert



design 3
Zinc plated steel through insert

Knob "Sologne" with through insert, design 1, 2, 3, 4, 5

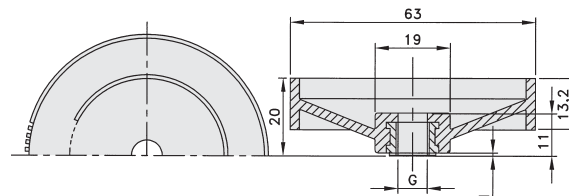
Design	A	G	B	C	D	Reference	Pack
1	15	M3	6	5	7	6500	50 pcs
1	15	M4	6	5	7	6501	50 pcs
1	20	M5	8	7	9	6511	50 pcs
1	20	M6	8	7	9	6512	50 pcs
2	25	M6	10			6550	50 pcs
2	25	M8	10			6551	50 pcs
3	42	M6	12			6520	50 pcs
3	42	M8	12			6521	50 pcs
3	42	M10	12			6522	50 pcs
4	50	M6	12			6530	50 pcs
4	50	M8	12			6531	50 pcs
5	70	M6	20			6540	50 pcs
5	70	M8	20			6541	50 pcs



design 4
Zinc plated steel through insert

Knob "Sologne" with through insert, design 1 bis

Design	R	d	d1	H	h1	Reference	Pack
1bis	20	M5	13	13	6	6968	50 pcs
1bis	20	M6	13	13	6	6969	50 pcs



design 5
Zinc plated steel through insert