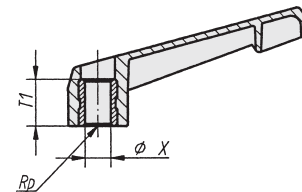
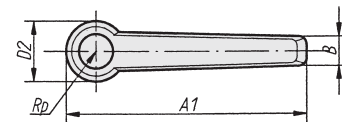


Fixed Handle

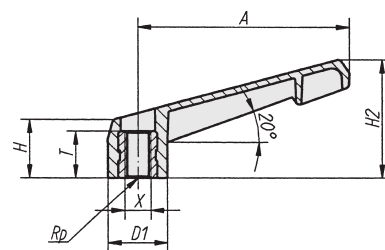
Handle made of **polyamid** filled with microscopic glass beads, allowing for high-impact resistance and durability. Standard color is black.

Fastening, zinc plated steel inserts.

Optimum utilisation between -50° and 130° Celsius, outstanding resistance to chemicals, oil as well as tough climatic conditions.



Blind hole version



Through hole version

Fixed handle with blind hole in metal insert

A	X _{H9}	T1	Reference	g	Pack
40	6	10	7706	11	5 pcs
65	8	14	7708	20	5 pcs
80	10	14	7710	42	5 pcs
95	12	18	7712	65	5 pcs
110	16	18	7716	105	5 pcs

Fixed handle with through hole metal insert

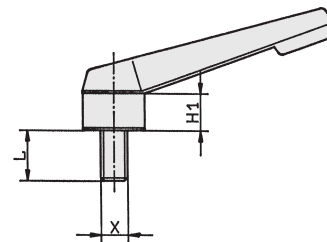
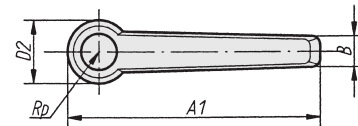
A	X	T	D1	D2	H	H1	H2	A1	B	Reference	g	Pack
40	M4	10	13,8	14	17	11	27	47	8	7604	11	5 pcs
40	M5	10	13,8	14	17	11	27	47	8	7605	11	5 pcs
40	M6	10	13,8	14	17	11	27	47	8	7606	11	5 pcs
65	M8	14	18,3	18,5	18	11	36,5	75	9	7608	20	5 pcs
80	M10	18	21,8	22	22	14	45	91	11	7610	42	5 pcs
95	M12	18	25,8	26	26	17	54	108	13	7612	65	5 pcs
110	M16	18	30,8	31	31	21	63	126	16	7616	10	5 pcs

Fixed Handle

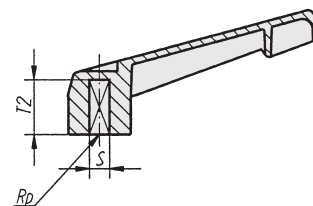
(continued)



BOUTET introduced, in september 2009, the 1st full service e-shop for industrial components, with free access to live real-time stock levels. **SAME DAY UPS Shipping** to 45 countries, and satellite tracking of your parcels. The total customer experience.



Male insert version



Square hole version

Fixed handle with male insert

A	X	▲ Standard length of stud L				Reference	g	Pack
		15	20	30	40			
40	M5		▲			9605- **	14	5 pcs
40	M6		▲			9606- **	15	5 pcs
65	M8	▲	▲	▲		9608- **	30	5 pcs
80	M10			▲		9610- **	65	5 pcs
95	M12			▲		9612- **	102	5 pcs
110	M16				▲	9616- **	195	5 pcs

** Please fill in the length of stud L, example : 9616**40** for L : 40 mm.

Fixed handle with square hole in plastic

A	S _{H11}	T2	D1	D2	H	H1	H2	A1	B	Reference	g	Pack
40	5	13	13,8	14	17	11	27	47	8	7805	5	5 pcs
65	6	16	18,3	18,5	18	11	36,5	75	9	7806	10	5 pcs
80	8	18	21,8	22	22	14	45	91	11	7808	15	5 pcs
95	10	20	25,8	26	26	17	54	108	13	7810	24	5 pcs
110	12	26	30,8	31	31	21	63	126	16	7812	40	5 pcs